

## Features

- Recommended for reflow processing
- Rotor design compatible with pick and place and automatic adjustment equipment
- Supplied in 8 mm embossed tape, compatible with automatic assembly equipment
- Carbon element



Model TC73 is currently available, although not recommended for new designs. [Model TC33](#) is preferred.

- RoHS compliant\* - see [processing information on lead free surface mount trimmers](#)

# TC73 - Trimming Potentiometer

## Electrical Characteristics

Standard Resistance Range ..... 500 to 1 megohm  
 (see standard resistance table)  
 Resistance Tolerance .....  $\pm 30\%$  std.  
 Absolute Minimum Resistance  
 $\leq 1K$  Ohms ..... 20 ohms max.  
 $> 1K$  Ohms .....  $2\%$  max. of TR  
 Contact Resistance Variation  
 .....  $5\%$  max.  
 Resolution ..... Infinite  
 Adjustment Angle .....  $260^\circ \pm 20^\circ (-2)$

## Environmental Characteristics

Power Rating (50 VDC max.)  
 $50^\circ C$  ..... 0.05 watt  
 Temperature Range .....  $-25^\circ C$  to  $+85^\circ C$   
 Temperature Coefficient ...  $\pm 250$  ppm/ $^\circ C$   
 Humidity .....  $95\% RH$   
 500 hours  
 TRS max. ....  $+15\%$  to  $-2\%$   
 Load Life  
 ..... @  $50^\circ C$  rated power 500 hours  
 TRS  $\pm 5\%$   
 Rotational Cycling ..... 20 turns  
 TRS  $\pm 20\%$

## Physical Characteristics

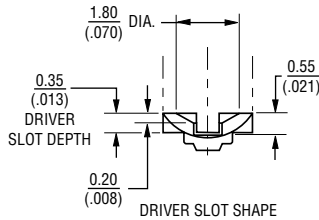
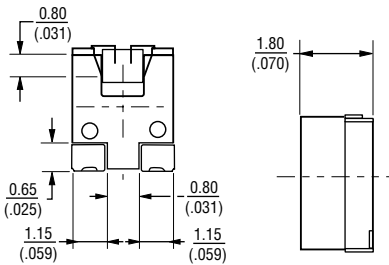
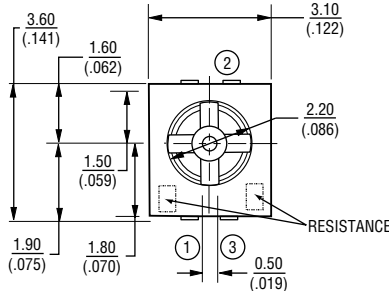
Torque ..... 10-150 g-cm max.  
 Mechanical Angle  
 -1 .....  $260^\circ \pm 20^\circ$   
 -2 ..... Continuous  
 Electrical Angle  
 Both .....  $260^\circ$  nom.  
 Marking ..... Part marking code  
 Standard Packaging  
 ..... 2000 pcs./7" reel

## Soldering Process

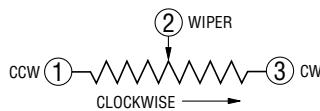
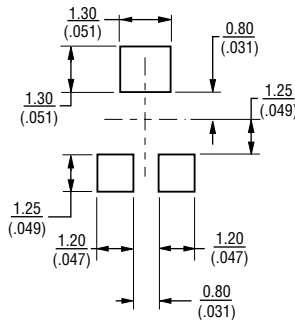
Hand Soldering... Soldering Iron of 20 W or less controlled at  $280^\circ C$  for about 3 sec. while applying solder  
 Reflow Soldering ..... Peak temperature or reflow oven should be set to  $240^\circ C$  max.

## Product Dimensions

TC73X/W-2



SUGGESTED PCB LAYOUT



DIMENSIONS:  $\frac{MM}{(INCHES)}$

## How To Order

TC73 X - 1 - 103 E

Model \_\_\_\_\_  
 Style \_\_\_\_\_  
 Orientation of Parts In Tape:  
 Style X: Terminals Away From Sprocket Holes  
 Style W: Terminals in direction to sprocket holes (preferred)  
 Standard or Modified Product Indicator \_\_\_\_\_  
 1 = Mechanical rotation stop (preferred)  
 2 = Continuous  
 Resistance Code \_\_\_\_\_  
 Embossed Tape Designator \_\_\_\_\_  
 E = 2000 pcs. per reel, 8 mm tape  
 Consult factory for other available options.

## Standard Resistance Table

Resistance (Ohms)	Part Marking Code	Resistance Code
500	52	501
<b>1,000</b>	<b>13</b>	<b>102</b>
<b>2,000</b>	<b>23</b>	<b>202</b>
<b>5,000</b>	<b>53</b>	<b>502</b>
<b>10,000</b>	<b>14</b>	<b>103</b>
<b>20,000</b>	<b>24</b>	<b>203</b>
50,000	54	503
100,000	15	104
200,000	25	204
500,000	55	504
1,000,000	16	105

Popular distribution resistance values listed in boldface. Special resistances available.