

REVISIONS table with columns: REVISION, DESCRIPTION, DATE, DWN, APVD. Includes rows for DEVELOPMENT, RELEASED, and ECR-15-018668.

APPLICATOR STYLE CONVERSION CHART table. Columns: PART NUMBER, REVISION, DESCRIPTION, FEED TYPE, CONVERT TO, PART NUMBERS REQUIRED.

APPLICATOR DATA table. Columns: CRIMP, SIZE, TYPE. Includes WIRE and INSUL specifications.

TERMINAL DATA: TE TERMINAL TE CRIMP SPECIFICATION table. Includes terminal name, wire strip length, insulation diameter range, and terminals applied.

WIRE SIZE table with columns: WIRE SIZE, CRIMP HEIGHT mm [INCH], CRIMP HEIGHT REFERENCE SETTING.

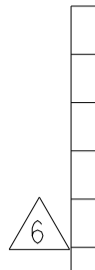


- RECOMMENDED SPARE PARTS
GREASE BEARING SURFACES LIGHTLY
LUBRICATE DAILY PER THE APPLICATOR INSTRUCTION SHEET SUPPLIED WITH THE APPLICATOR.
APPLICATOR SPECIFIC DATA TO BE ENTERED INTO BLANK MEMORY CHIP AT ASSEMBLY.
ADJUSTMENT OF THE STRIPPER MAY BE REQUIRED WHEN MOVING THE APPLICATOR BETWEEN BENCH AND LEADMAKER APPLICATIONS.
APPLY PART NUMBER 1-23419-5 LOCTITE TO THREADS OF ITEMS 62 & 180.
GREASE THREADS, GROOVE AND O-RING ON ITEMS 35 & 252.
MAGNET, ITEM 166 MUST BE ORIENTED CORRECTLY IN ORDER TO PROPERLY ACTUATE THE COUNTER.
CRIMP HEIGHT REFERENCE SETTING WAS THE SETTING USED WHEN THE APPLICATOR WAS QUALIFIED AT THE FACTORY.
SPARE FEED CAM STORAGE LOCATION REFER TO INSTRUCTION SHEET FOR ADDITIONAL INFORMATION.
THE RECOMMENDED SET-UP FOR END FEED APPLICATORS IS POST-FEED WITH ITEM 2119653-1.
WHEN ASSEMBLING -6 NON-CRIMP HEIGHT ADJUST APPLICATOR USE SHIM PACK 2119957-2 TO ALIGN APPLICATOR'S MAXIMUM WIRE CRIMP HEIGHT AT NORMAL TERMINATOR SHUT HEIGHT.

*WARNING
ON INSTALLATION, SET WIRE DISC, ITEM 40 TO LARGEST WIRE SIZE SETTING. USE OF SETTINGS BELOW MINIMUM REQUIRED CRIMP HEIGHT SETTING WILL CAUSE DAMAGE TO CRIMP TOOLING.

Item list table with columns: PART NO, DESCRIPTION, ITEM NO. Lists various parts like BLOCK, FRONT DEPRESSOR, O-RING, PUSH ROD, etc.

ATLANTIC VERSION
Shown on sheets 1 of 4 & 2 of 4
(Pacific version shown on sheets 3 of 4 & 4 of 4)

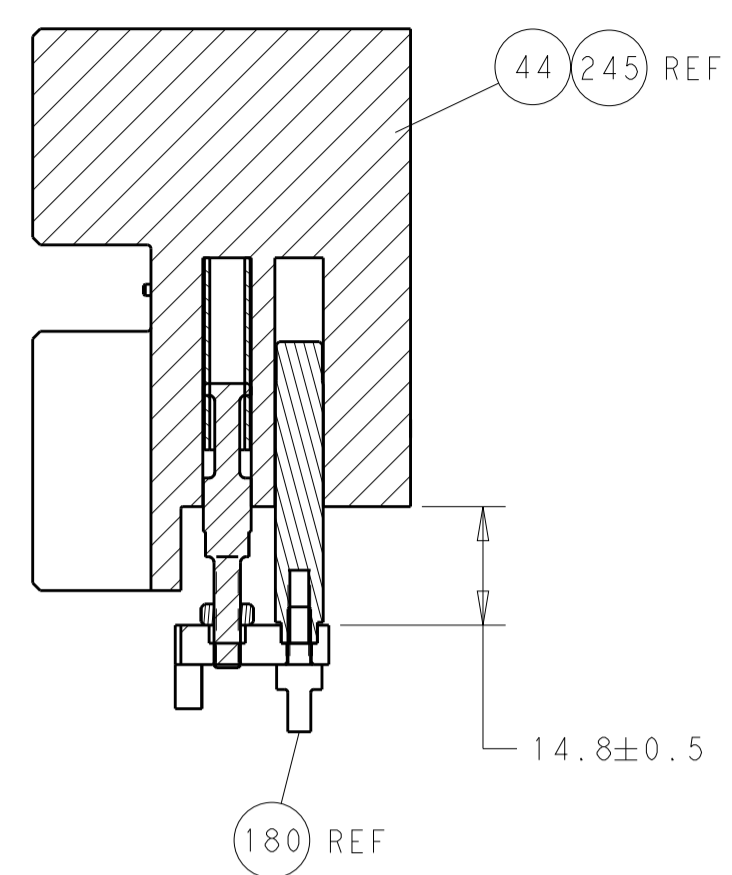


Main parts list table with columns: PART NO, DESCRIPTION, ITEM NO. Includes items 1 through 84, detailing various assembly components like MECHANICAL FEED ASSEMBLY, AIR FEED MODULE, TAG, IDENTIFICATION, etc.



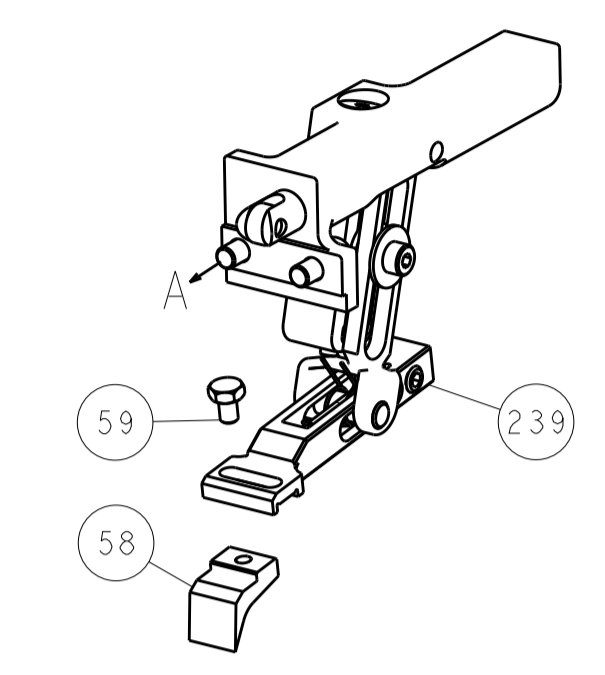
Technical drawing header and title block. Includes dimensions, tolerances, materials, finishes, and drawing metadata like title, date, and sheet number.

LOC		DIST		REVISIONS			
A	66	P	LTM	DESCRIPTION	DATE	OWN	APVD
		-	-	SEE SHEET 1	-	-	-

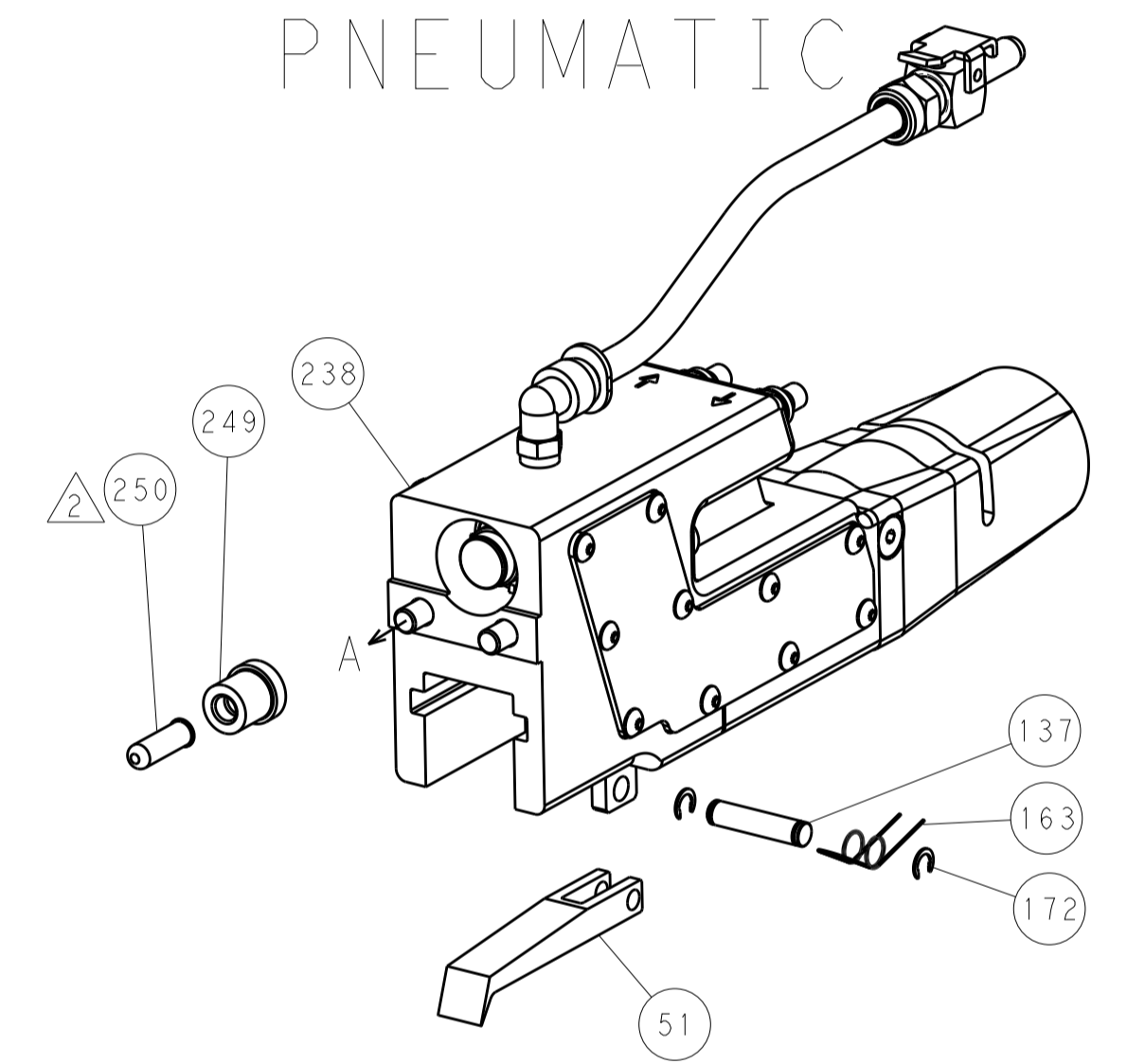


HOLDDOWN SET-UP

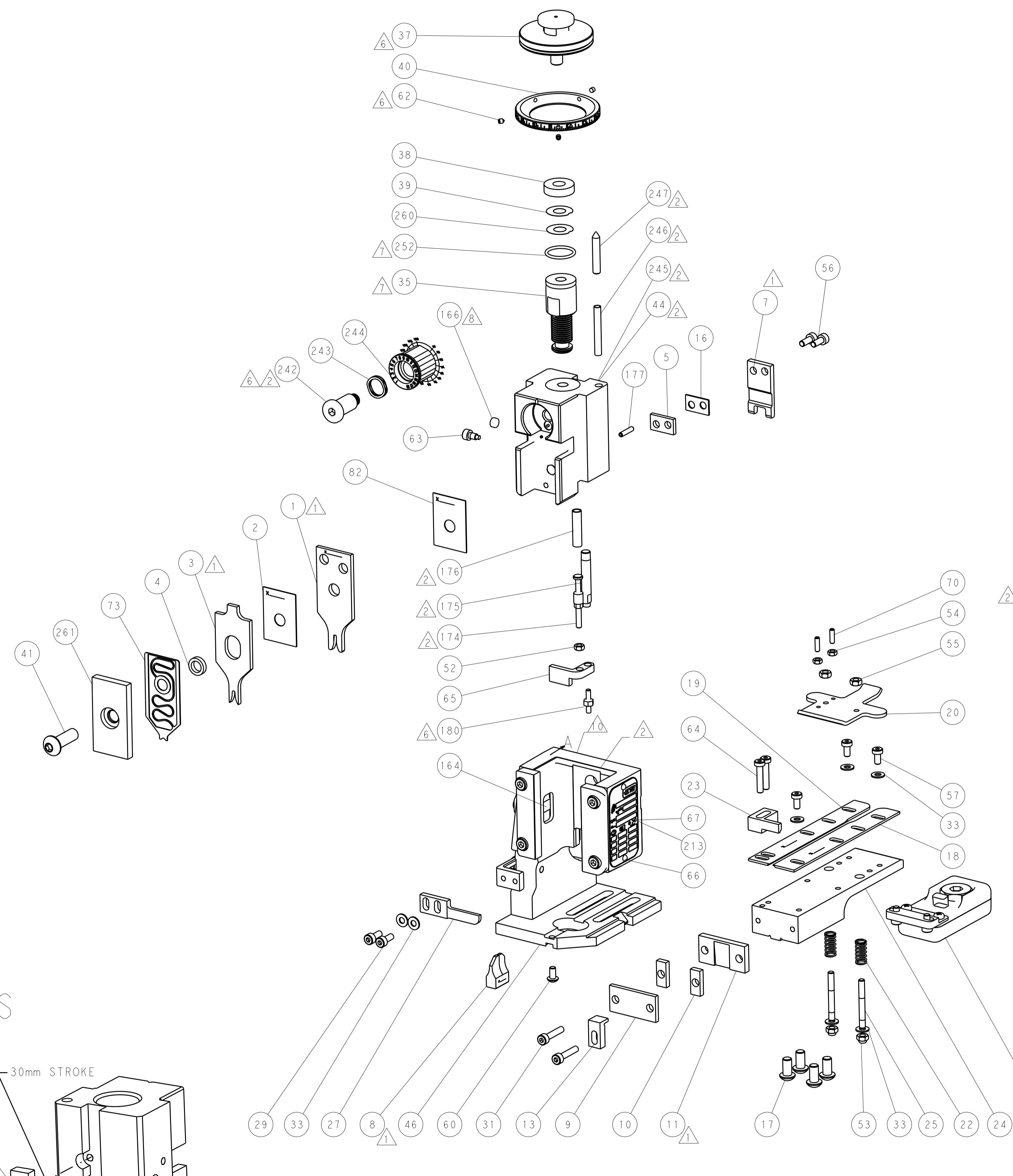
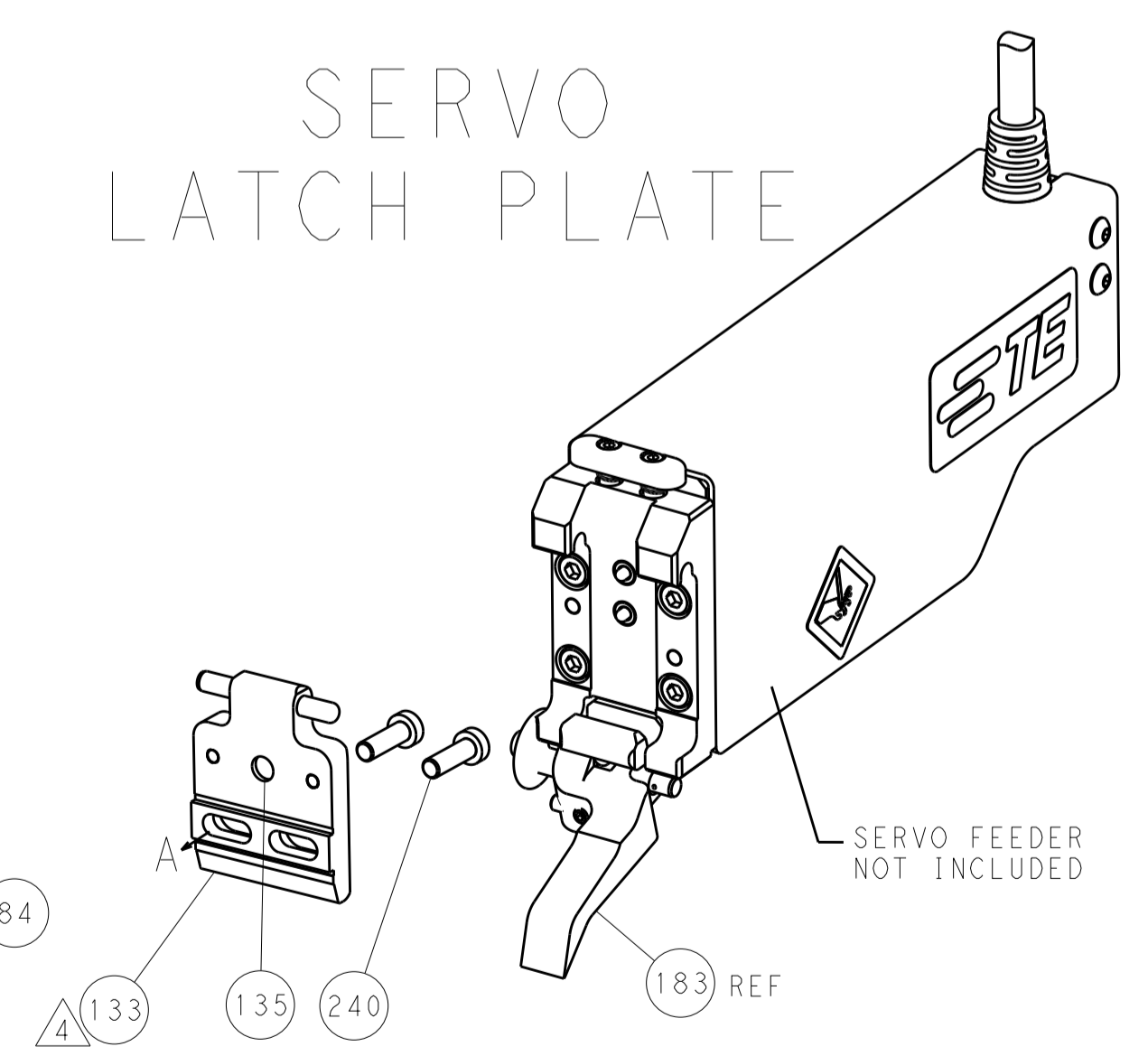
FEED TYPE
MECHANICAL



PNEUMATIC



SERVO
LATCH PLATE



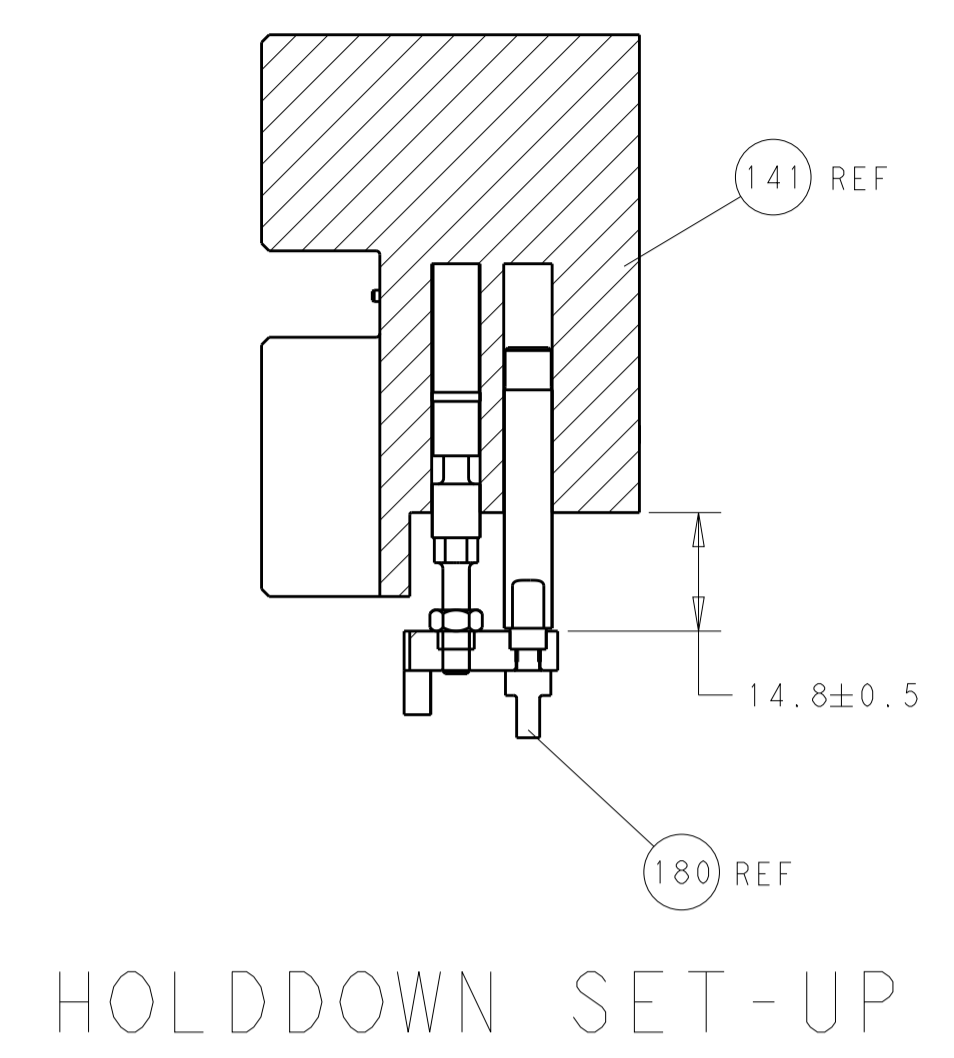
CAM POSITIONS



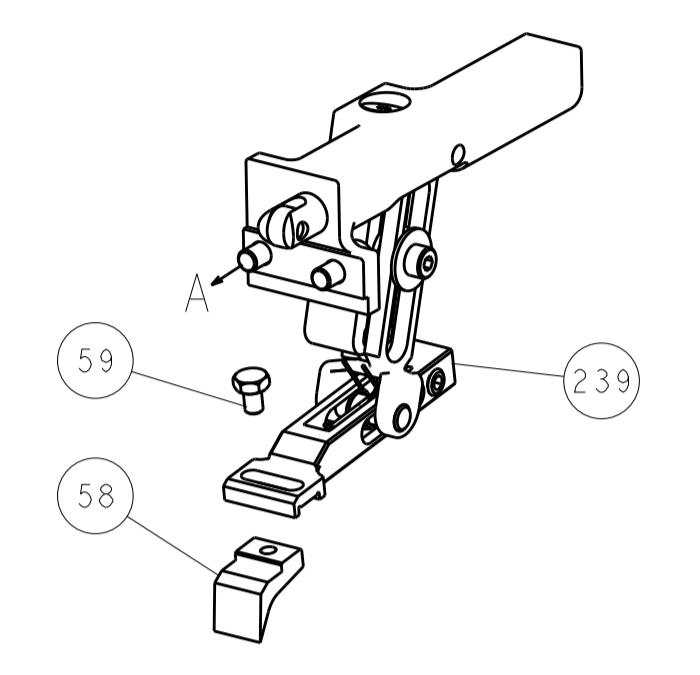
ATLANTIC VERSION
 Shown on sheets 1 of 4 & 2 of 4
 (Pacific version shown on sheets 3 of 4 & 4 of 4)

DIMENSIONS:		TOLERANCES UNLESS OTHERWISE SPECIFIED:		DWN: J. HOU 15MAY2015		TE Connectivity	
mm	0 PLC	±		CHK: L. ZHANG 15MAY2015	NAME: Ocean End Feed Applicator		TE Connectivity Harrisburg, PA 17105-3608
	1 PLC	±		APVD: H. GUO 15MAY2015	PRODUCT SPEC:		
	2 PLC	±			APPLICATION SPEC:		
	3 PLC	±			SIZE: CAGE CODE: DRAWING NO:		RESTRICTED TO:
	4 PLC	±			A1 00779 ©=2150541		
MATERIAL:	FINISH:	WEIGHT:	SCALE:	Customer Accessible Production Drawing		SHEET 2 OF 4	REV B

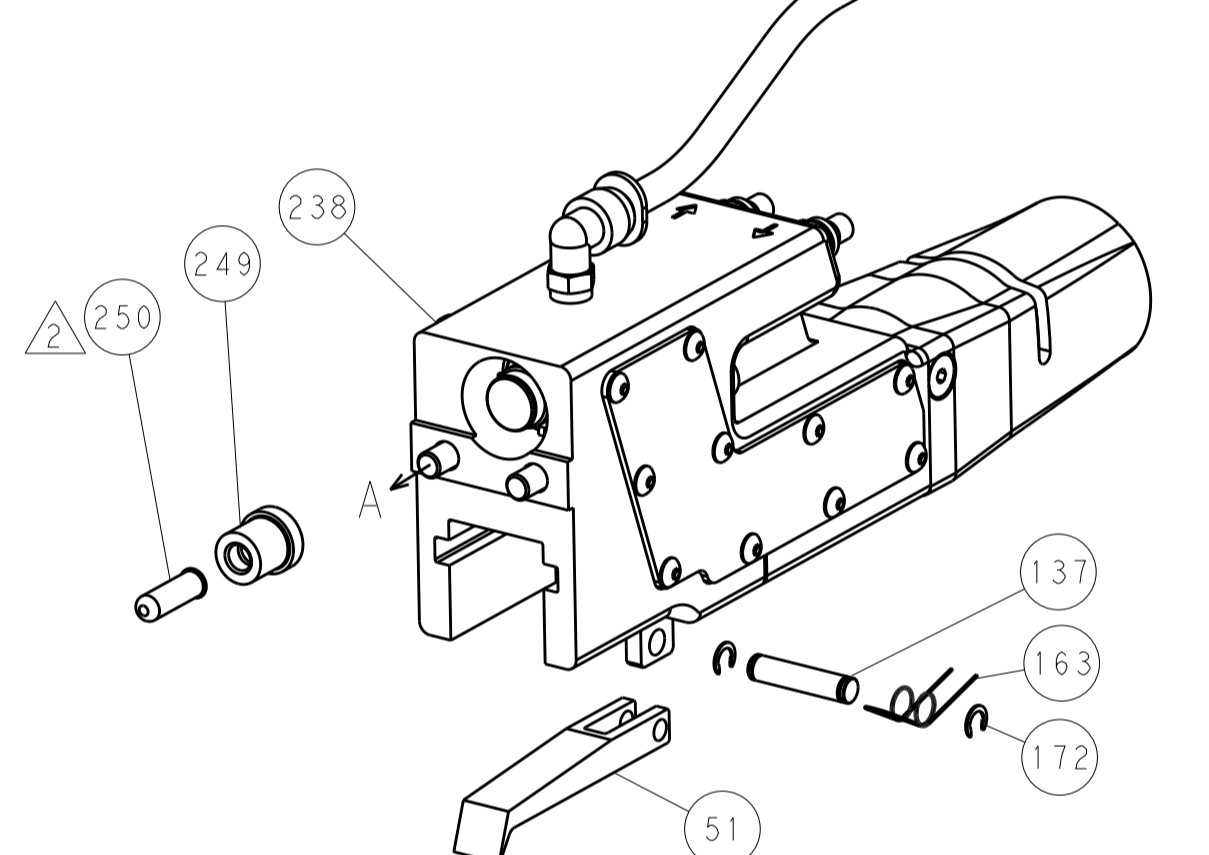
LOC		DIST		REVISIONS			
A	66	P	LTM	DESCRIPTION	DATE	OWN	APVD
		-	-	SEE SHEET 1			



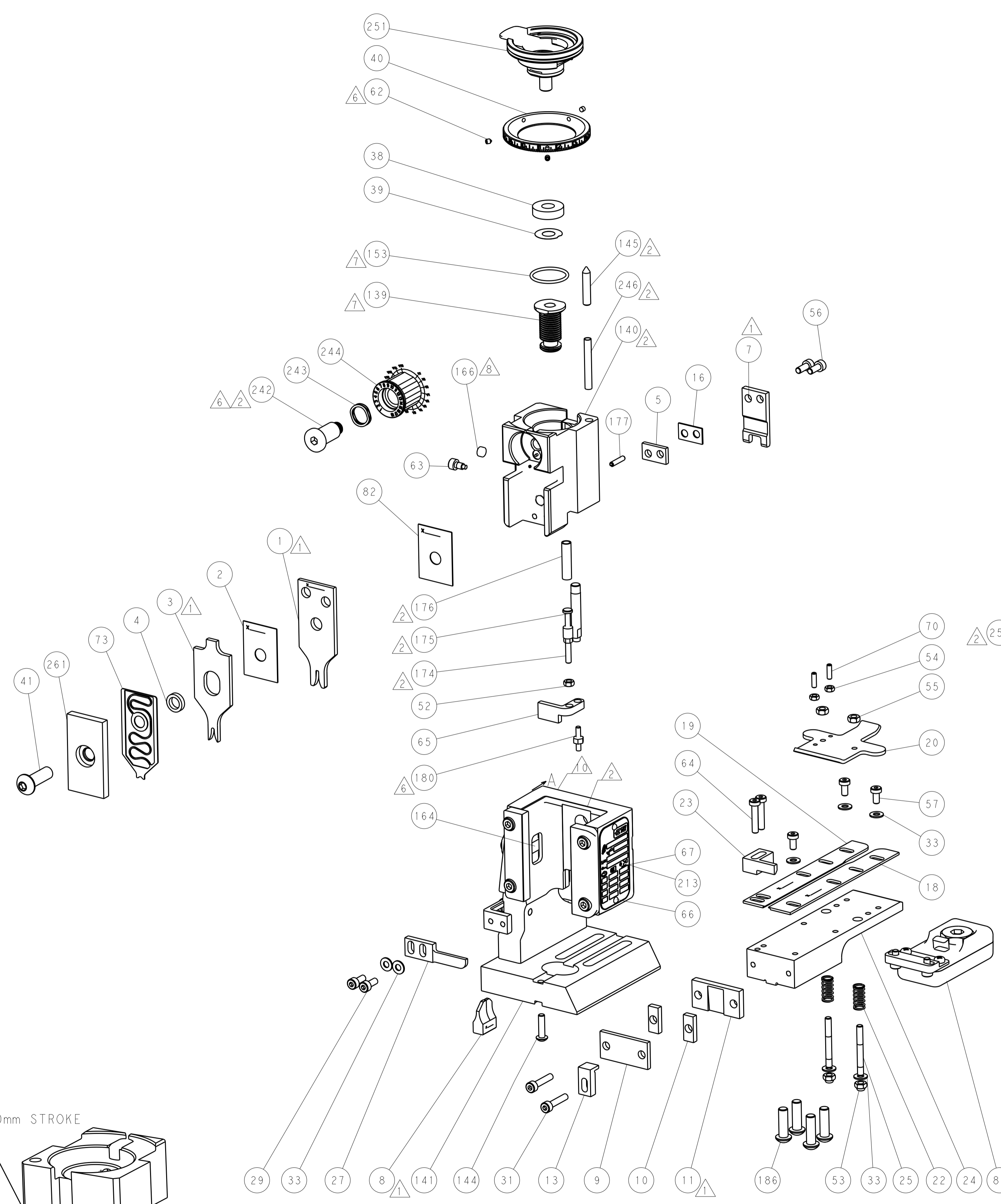
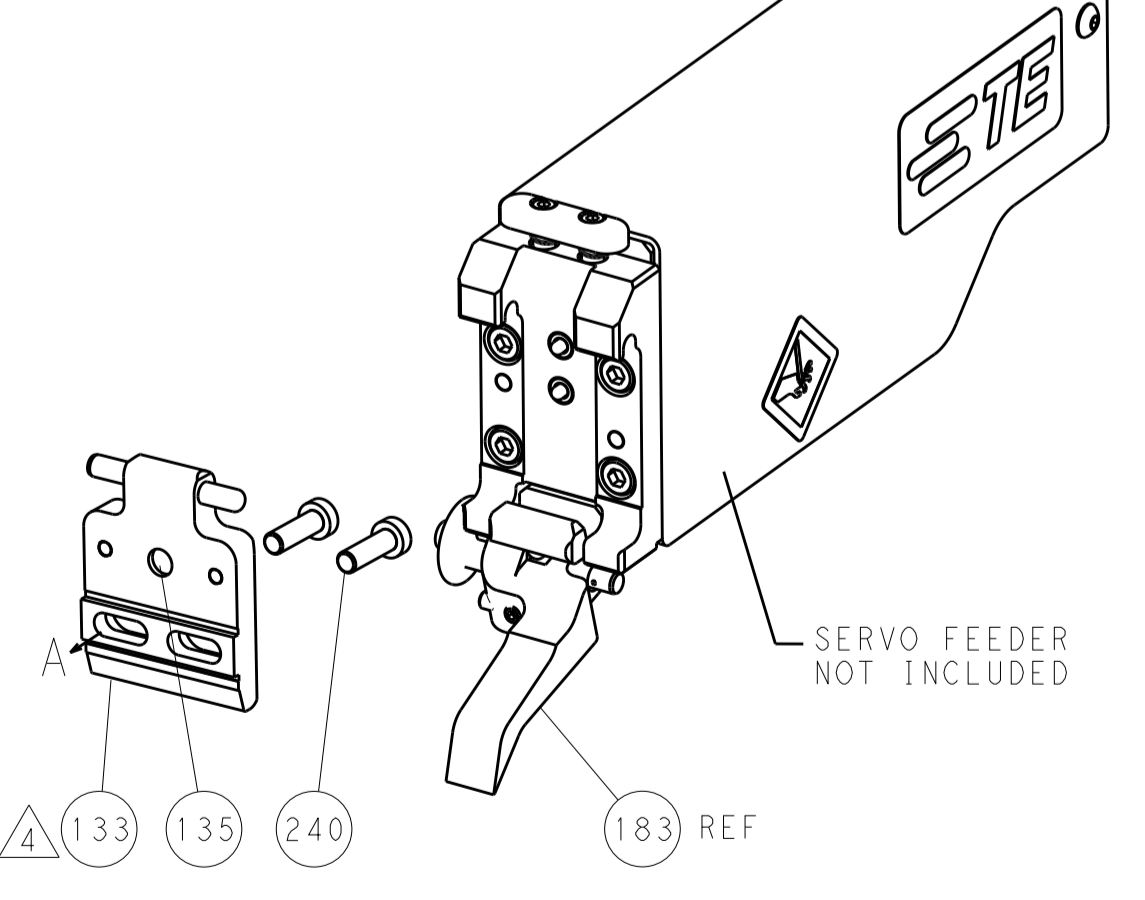
FEED TYPE
MECHANICAL



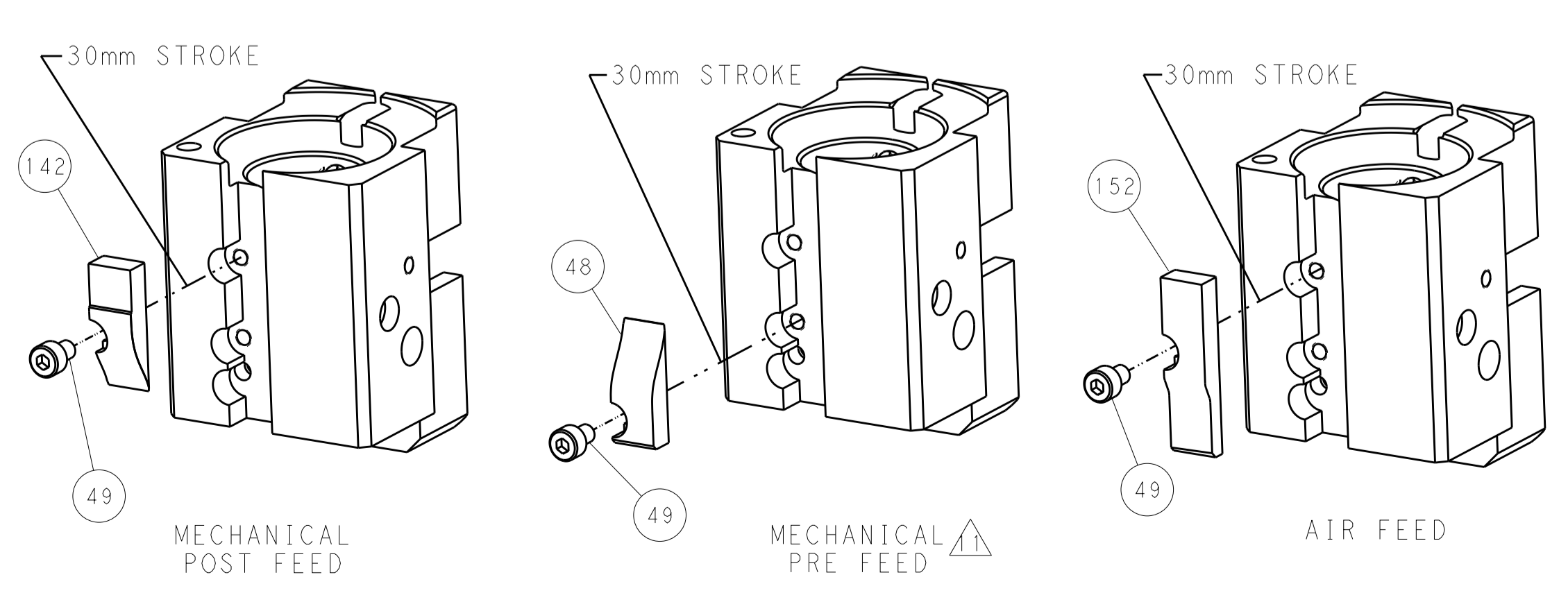
PNEUMATIC



SERVO LATCH PLATE



CAM POSITIONS



PACIFIC VERSION
 Shown on sheets 3 of 4 & 4 of 4
 (Atlantic version shown on sheets 1 of 4 & 2 of 4)

DIMENSIONS:		TOLERANCES UNLESS OTHERWISE SPECIFIED:		DWG: J. HOU 15MAY2015		STE TE Connectivity	
mm	0 PLC	±		CHK: L. ZHANG 15MAY2015	NAME: Ocean End Feed Applier		Harrisburg, PA 17105-3608
	1 PLC	±		APVD: J. GUO 15MAY2015	SIZE: CAGE CODE: DRAWING NO:		RESTRICTED TO:
	2 PLC	±		PRODUCT SPEC:		A1 00779	©=2150541
	3 PLC	±		APPLICATION SPEC:		Customer Accessible Production Drawing	
	4 PLC	±		WEIGHT:		SCALE: 1:1	SHEET 4 OF 4
	ANGLES:	±		FINISH:		REV B	