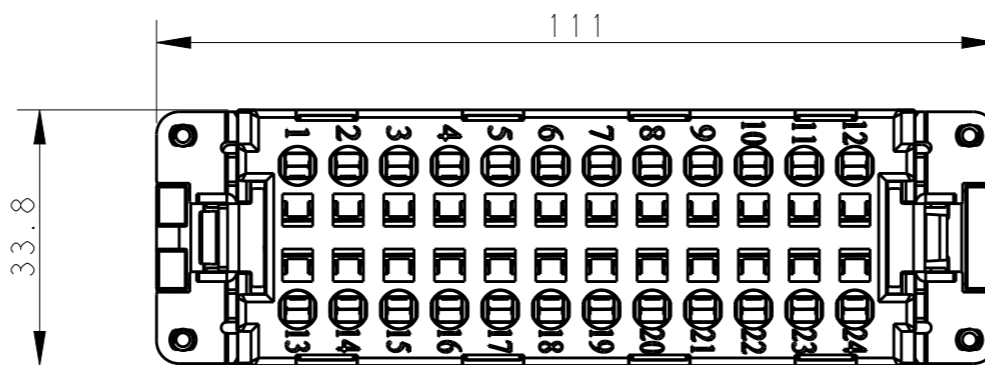
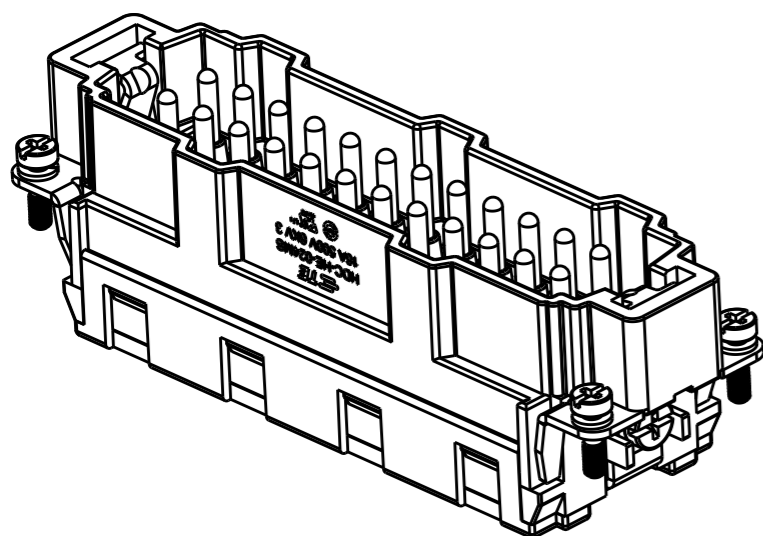


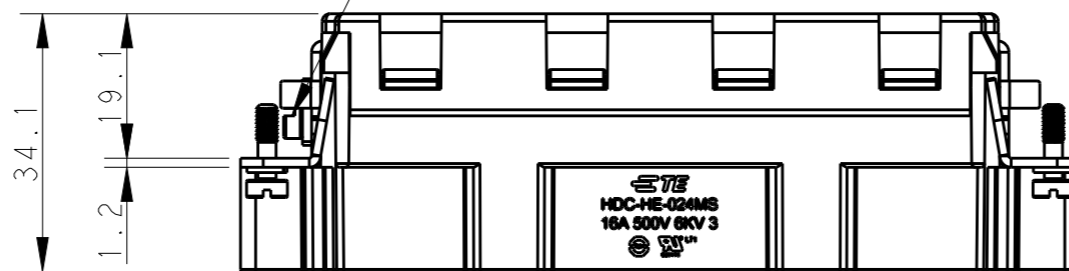
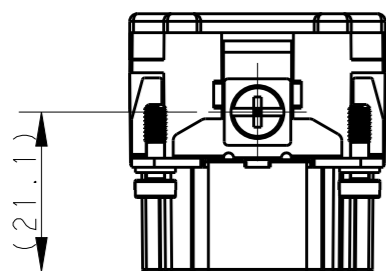
THIS DRAWING IS UNPUBLISHED. RELEASED FOR PUBLICATION 20
 © COPYRIGHT 20 BY - ALL RIGHTS RESERVED.

REVISIONS

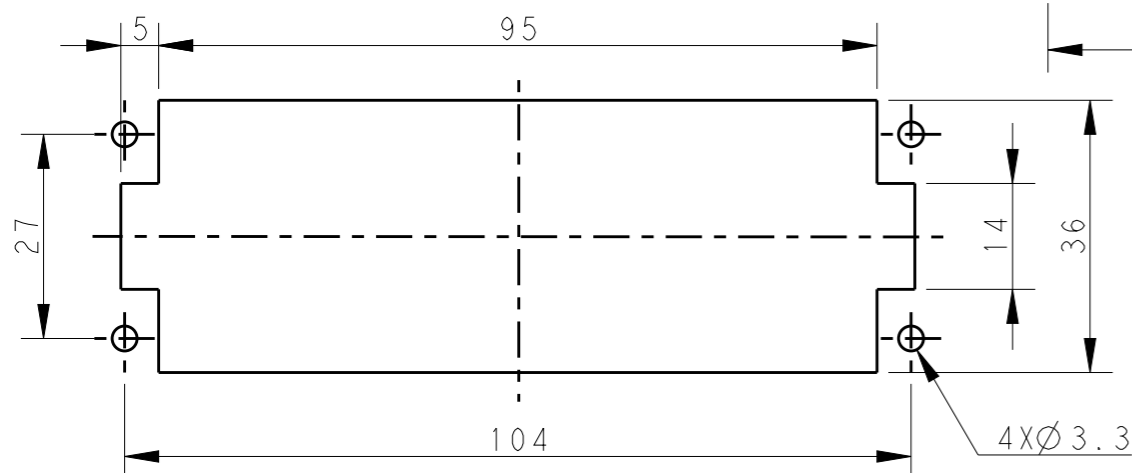
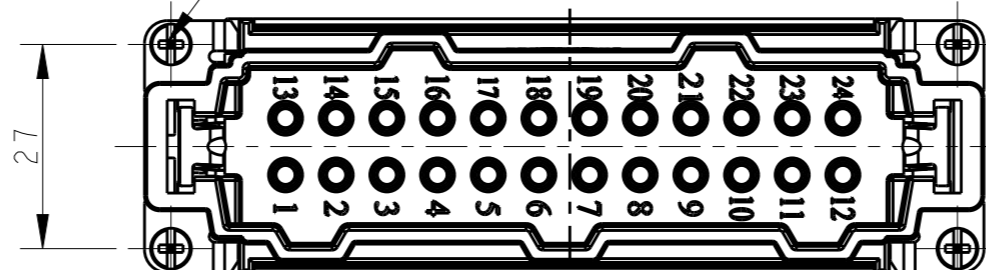
P	LTR	DESCRIPTION	DATE	DWN	APVD
	A	INITIAL	05Jan2015	GY	CW
	A1	ECR-15-004309	24Mar2015	GY	CW
	B	ECR-15-013759	26Sep2015	DW	CW



M4 screw, recommended tightening torque 1.2Nm



4 X M3 screw, recommended tightening torque 0.5Nm




NOTES:

- TECHNICAL CHARACTERISTICS:
 INSULATION MATERIAL: PC
 RATED VOLTAGE: 500V
 RATED CURRENT: 16A
 INSULATION RESISTANCE: $\geq 400M\Omega$
 RATED IMPULSE VOLTAGE: 6KV
 POLLUTION DEGREE: 3
 FLAMMABILITY: UL94V-0
 MATING CYCLES: 500 CYCLES
 OPERATION TEMPERATURE: $-40^{\circ}C \sim +125^{\circ}C$
 WIRE RANGE: $0.5mm^2 \sim 2.5mm^2$ (AWG20-AWG14)
 CONTACT TYPE: SPRING CLAMP

注释:

- 技术参数:
 绝缘材料: PC
 额定电压: 500V
 额定电流: 16A
 绝缘电阻: $\geq 400M\Omega$
 脉冲电压: 6KV
 污染等级: 3
 阻燃等级: UL94V-0
 插拔次数: 500 次
 工作温度: $-40^{\circ}C \sim +125^{\circ}C$
 接线范围: $0.5mm^2 \sim 2.5mm^2$ (AWG20-AWG14)
 接线类型: 弹片压接

HE-024-MS	T2040243101-000
DESCRIPTION	PART NUMBER

THIS DRAWING IS A CONTROLLED DOCUMENT.		DWN	Gino.Yao	18Aug2014	 TE Connectivity NAME HE-024-MS		
DIMENSIONS: mm		CHK	Chris.Wang	18Aug2014			
TOLERANCES UNLESS OTHERWISE SPECIFIED:		APVD	Xiang.Xu	18Aug2014			
0 PLC \pm - 1 PLC \pm - 2 PLC \pm - 3 PLC \pm - 4 PLC ANGLES \pm -		PRODUCT SPEC	108-137044				
MATERIAL		FINISH	114-137044		SIZE	A3	
-		-	-		CAGE CODE	00779	
-		-	-		DRAWING NO	T2040243101000	
-		-	-		WEIGHT	-	
-		-	-		CUSTOMER DRAWING	SCALE	1:1
-		-	-		RESTRICTED TO	-	
-		-	-		SHEET	1 OF 1	
-		-	-		REV	B	